

# Vulnerable Individuals

**Guy Pace**

WSCC Community Safety  
June 2018



*Everyone has the right to be safe  
from harm and live a life free  
from abuse, neglect and  
exploitation.*

- **Anyone** can be vulnerable



- Vulnerability presents itself in **many different forms**
  - Scams & Fraud against elderly
  - Radicalisation & Extremism
  - Child Sexual Exploitation
  - Drug Exploitation
  - Criminal Exploitation (linked to SOC & County Lines)
  - Hate Crime
- **Can and does happen in West Sussex**
- **We all have a role to play:** recognising & responding

# Crawley's Priorities: The Big Three

- The Safer Crawley Partnership executive have identified:
  - **Serious and Organised Crime**
  - **Street Community**
  - **Vulnerable Individuals**

The partnership may also have to respond to other issues as outlined by the previous threats.....



# Child Exploitation

## Sexual Exploitation

- 150+ identified
- Boys *and* girls from age 11+
- Links to London via rail network
- Boyfriend, Party & Peer on Peer

## Drug Exploitation

- 40+ identified
- Mainly boys
- Intel: girls asked to conceal drugs
- Links to county lines

## Criminal Exploitation

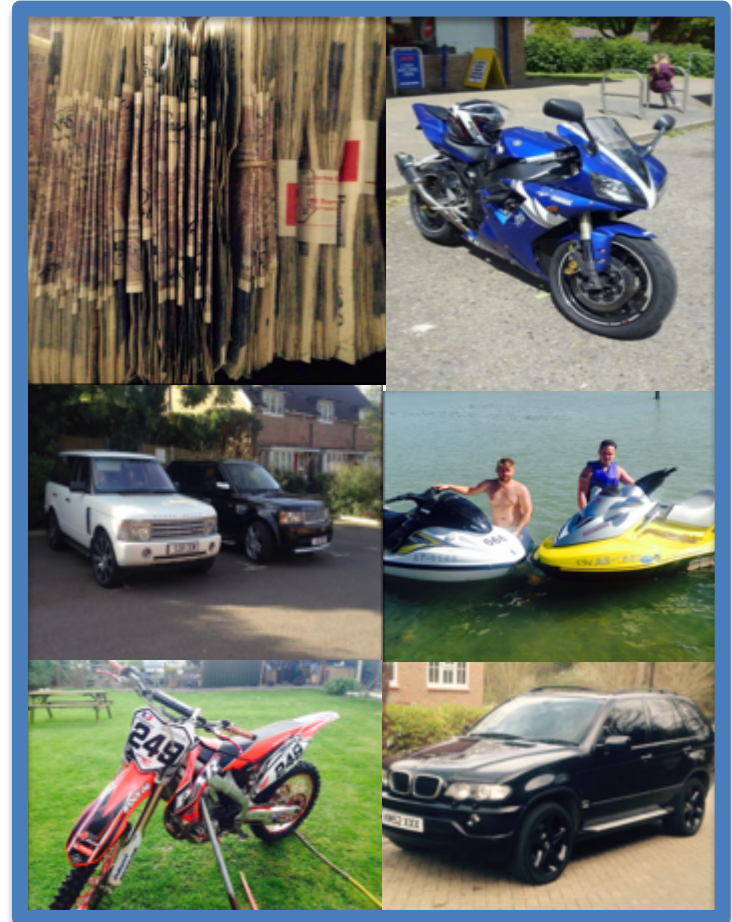
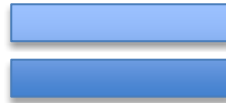
- Prevalence Unknown
- Links with SOC & County Lines
- Perpetrators also victims

# Serious and Organised Crime

The National Crime Agency Threat Assessment:

1. **Vulnerability** - including CSE, modern slavery & human trafficking and organised immigration crime;
2. **Prosperity** - including cyber-crime, money laundering and other economic crime, and;
3. **Commodity** - including the illicit trade in firearms and drugs.

# OCG Activity





# County lines exploitation

## Drug distribution into Sussex from London & other cities

### ***'Cuckooing'***

Vulnerable residents targeted to accommodate dealers or deal on behalf of the drug network.

Use of intimidation, incentive or on basis of a sexual relationship

### ***Juvenile 'runners'***

Vulnerable young people used to deliver and/or deal drugs on behalf of gangs

Use of intimidation or incentive locally/from metropolitan centres.

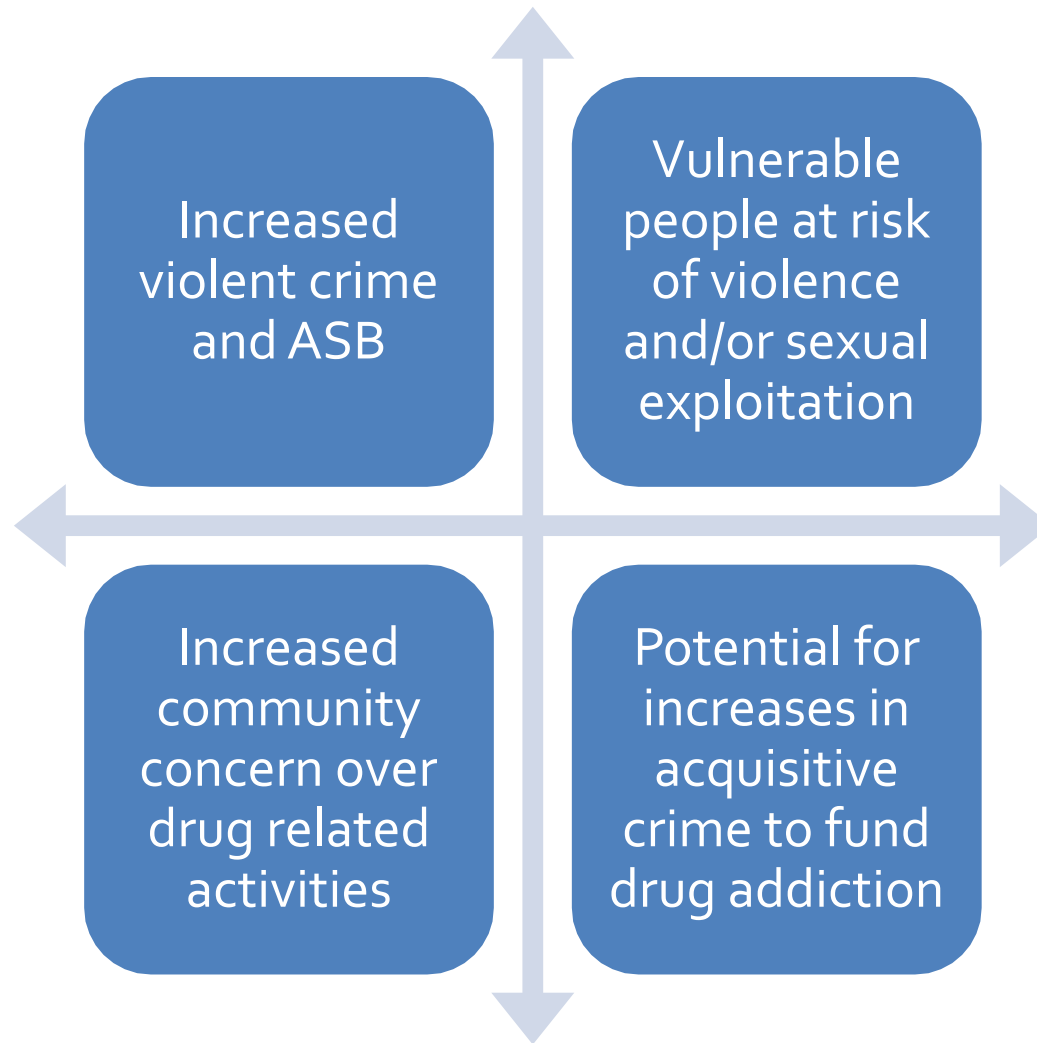
# County Lines-what is it?

- Urban Gangs supplying drugs to suburban areas, including coastal towns
  - Typically recruit and exploit children / vulnerable to courier cash and drugs
  - 'Users' will ask for drugs via mobile phone line operated by the Gang
  - Couriers travel between urban and coastal locations to collect cash and deliver drugs
  - County Lines cut across numerous crimes: Violence / Gangs
  - Modern Slavery
  - Safeguarding
  - Missing Persons
  - Youth Exploitation
- 
- Name of the County Line is how drug users refer to the County Line

# Cuckooing

- Gangs dealing in drugs will target vulnerable people and take over their address; process known as cuckooing
- Vulnerable people then used to deal drugs and CSE and modern day slavery
- Dealers often approach vulnerable persons offering free drugs/ money then take over their home
- The victims are vulnerable and often: drug users, unemployed, mental health issues, young single mums, missing children.
- Threats or actual violence used to achieve compliance
- Premises may not be known to police
- **Definition:** *"A crime where a drug dealer befriends a weak, old or otherwise vulnerable person, then takes over their home and uses it as a crack house."* **Urban Dictionary 2017**

# Impact of county lines in Sussex



# Radicalisation, Violent Extremism & Terrorism

We are talking about all forms, including:

- Far Right Extremism
- Far Left Extremism
- Animal Rights Extremism
- Al Qa'ida or Daesh inspired extremism (ISIS)
- Nationalist extremism (e.g. IRA)

# Has it happened here?

## Activity in West Sussex:

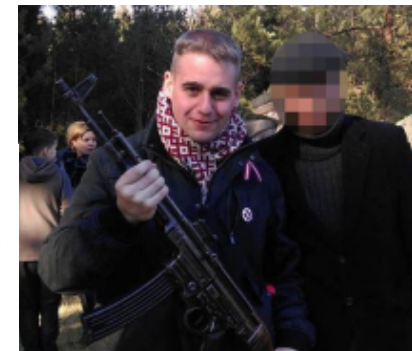
- IRA bombing (Bognor) 1994
- Op Crevice (Crawley) 2004
- National Action – Far Right Extremism
- Local man travelled to Syria
- Animal rights extremism – Huntingdon Life Sciences - 2010



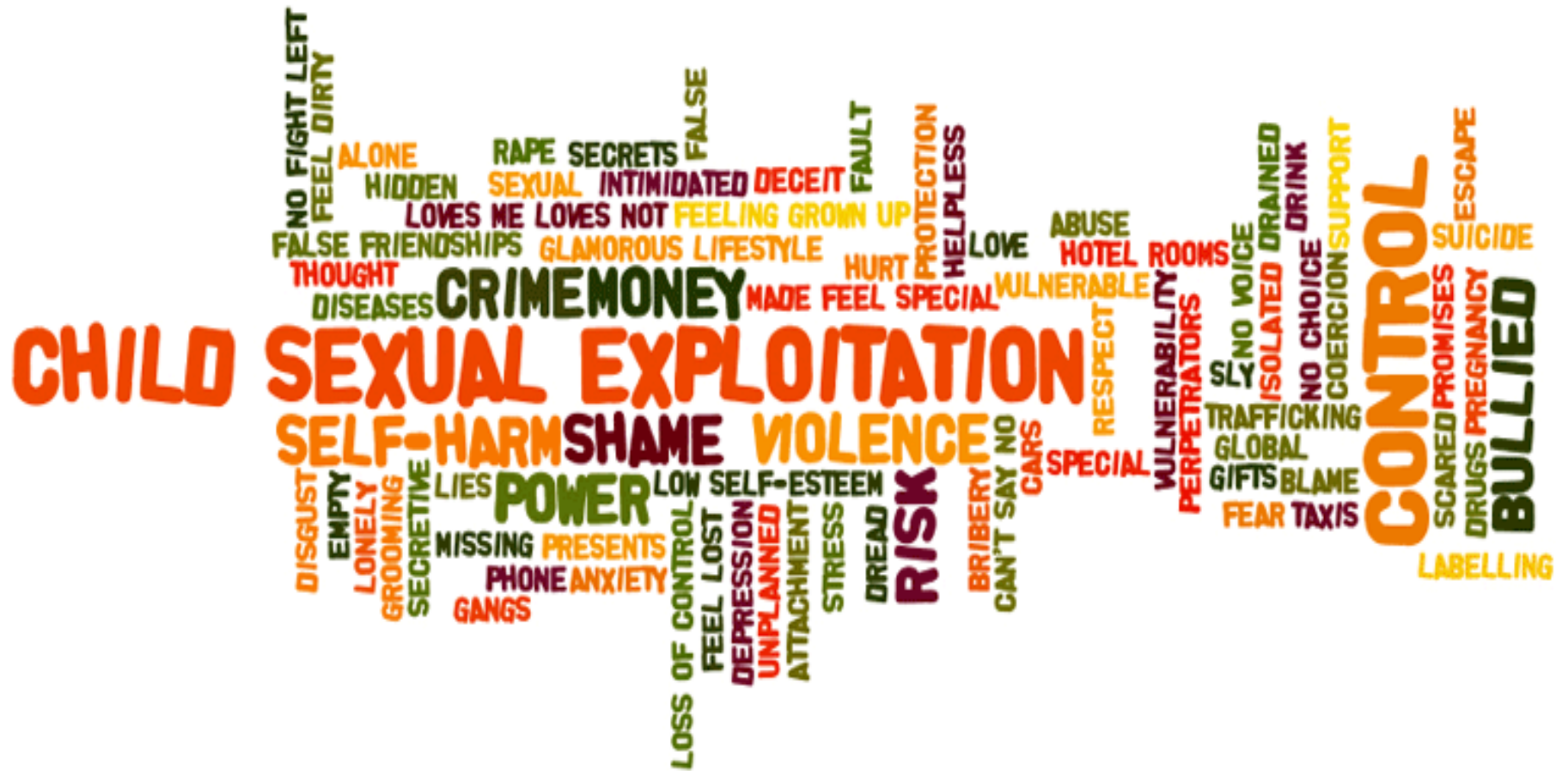
## National Action, British Neo-Nazi Group, To Be Banned By Government

Amber Rudd decries 'racist, anti-Semitic and homophobic organisation.'

'41-year-old, from Crawley in West Sussex, is believed to have carried out a suicide truck bombing in the city of Aleppo...' ( BBC News, 14 February 2014)



# Barriers to Reporting



# Community Intelligence

What is Intelligence ?

The role of partners and the public

How do you get involved?

Concerns re individual or address:

email [101@sussex.pnn.police.uk](mailto:101@sussex.pnn.police.uk) or call 101

Always 999 in an emergency

[crimestoppers-uk.org](http://crimestoppers-uk.org) 0800 559111